

December 19, 2024
The Royal Hotel, Ltd.
Shiba Park Hotel Co., Ltd.

Shiba Park Hotel and Park Hotel Tokyo Join RIHGA Royal Hotels

The Royal Hotel, Ltd. (located in Nakanoshima, Kita-ku, Osaka; Chief Executive Officer & Representative Director: Fumikazu Ueda, hereinafter referred to as RH) and Shiba Park Hotel Co., Ltd. (located in Shibakoen, Minato-ku, Tokyo; President and CEO: Rentaro Yanase, hereinafter referred to as SPH) have entered into a capital and business alliance agreement, integrating Shiba Park Hotel and Park Hotel Tokyo into RIHGA Royal Hotels.



RH has embraced the corporate purpose: *“Let us surround people, communities, the nation, and the world, in a warm embrace.”* Over the past 90 years, they have built a legacy of service excellence and hospitality, bringing unforgettable experiences to their guests. SPH, under the philosophy of *“Investigating the Way of Hospitality,”* has been highly regarded for our premium services and global sales capabilities, gaining strong support from international guests. This alliance leverages the strengths of both companies to address mutual management challenges, marking a significant step forward.

Moving forward, RH and SPH will deepen our collaboration in areas such as guest referrals and operational efficiency. Together, we aim to create a more attractive hotel group for our guests.

Message from Fumikazu Ueda, Chief Executive Officer & Representative Director of The Royal Hotel, Ltd.

“In our mid-term business plan *Re RISE 2026*, announced in May of this year, we emphasized expansion of our domestic hotel group as a key growth strategy, including the acquisition of inorganic assets. By joining forces with SPH, which boasts an 87% inbound rate and global recognition, and RH, which has a strong domestic foundation and prominence in western Japan, we believe both companies can maximize our strengths. Our shared values, rooted in a commitment to refining hospitality while respecting historical traditions, pave the way for sustainable growth and enhanced corporate value.”

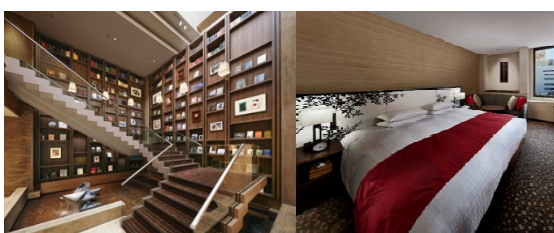
Message from Rentaro Yanase, President and CEO of Shiba Park Hotel Co., Ltd.

“This integration of SPH into RH marks a momentous milestone, allowing us to chart a bright vision for the future while continuing our legacy. By combining the unique strengths of both companies and leveraging our complementary cultures, we aim to lay a foundation for continued growth and development.”

Hotel Overviews

Shiba Park Hotel

The concept is “*A library hotel that connects people, towns, and history.*” With a collection of over 1,500 books focused on Japanese culture, Shiba Park Hotel offers guests a unique experience to relax and immerse themselves in literature.



Address: 1-5-10 Shibakoen, Minato-ku, Tokyo, Japan

Facilities: Restaurant “The Dining” & Four banquet halls

Rooms: 198

Location: Approximately 2 minutes from Onarimon Station on the Toei Mita Line

Website: <https://www.shibaparkhotel.com/en/>

Park Hotel Tokyo

The concept is “*Infinite Time and Space Amid Cognizant Japanese Beauty.*” With over 400 artworks permanently on display, Park Hotel Tokyo offers a museum-like experience where guests can stay surrounded by art. From the entrance to the restaurants and the corridors of all guest rooms, art exhibitions are held year-round.



Address: 1-7-1 Higashi Shimbashi, Minato-ku, Tokyo, Japan

Facilities: Japanese restaurant “Hanasanshou,” Bar “The Society,” and “ART colours Dining”

Rooms: 268

Location: Approximately 1 minutes from Shiodome Station on The Toei Oedo Line

Website: <https://parkhoteltokyo.com/>

About The Royal Hotel, Ltd.

The Royal Hotel, Ltd. traces their origins back to 1935 with the establishment of Shin Osaka Hotel, the predecessor of RIHGA Royal Hotel Osaka, founded by the Osaka business and political community with the vision of creating a modern hotel for distinguished guests. In 1990, the group adopted the name RIHGA Royal Hotels and expanded their hotel network both domestically and internationally. Over the years, they have welcomed guests from Japan and abroad, including state guests, managing their operations with a focus on delivering memorable and satisfying experiences.

In 2025, they will celebrate our 90th anniversary. Guided by their corporate purpose, “*Let us surround people, communities, the nation, and the world, in a warm embrace.*” The Royal Hotel, Ltd. strives to foster human

connections through their hotel operations, spreading warmth from person to person while working towards enhancing corporate value and achieving a sustainable society.

Recent Opening, Rebranding, and Future Projects:

- 2020 RIHGA Gran Kyoto (Minami-ku, Kyoto)
- 2022 RIHGA Royal Laguna Guam Resort (Guam)
- 2023 RIHGA Place Kyoto Shijo Karasuma (Shimogyo-ku, Kyoto)
- 2025 in Spring RIHGA Royal Hotel Osaka - Vignette Collection (Rebranding Open)
- 2026 in Spring RIHGA Royal Resort Okinawa Chatan (Chatan-cho, Nakagami-gun, Okinawa)
New hotel in Namba, Osaka (Naniwa-ku, Osaka)
- 2026 in Autumn New hotel in Hakata, Fukuoka (Hakata-ku, Fukuoka)
- 2027 in Autumn New hotel along Peace Boulevard in Hiroshima (Naka-ku, Hiroshima)

Chief Executive Officer & Representative Director: Fumikazu Ueda

Head Office: 5-3-68 Nakanoshima, Kita-ku, Osaka

Founded: January 1935

Hotel Website: <https://www.rihga.com/>

About Shiba Park Hotel Co., Ltd.

Shiba Park Hotel Co., Ltd. was founded in 1948. Since then, we have shared our journey with the Shiba district and our community, spanning the Showa, Heisei, and Reiwa eras. Preserving our signature comfort, we embrace the spirit, people, and history of the neighborhood through our Library Hotel concept, aiming to connect guests to a richer tomorrow with a curated collection of books reflecting the local culture and history.

President and CEO: Rentaro Yanase

Head Office: 1-5-10 Shibakoen, Minato-ku, Tokyo

Founded: 1948

Hotel Website: <https://www.shibaparkhotel.com/en/>