





PARK HOTEL  
TOKYO



## Reception & Rooms

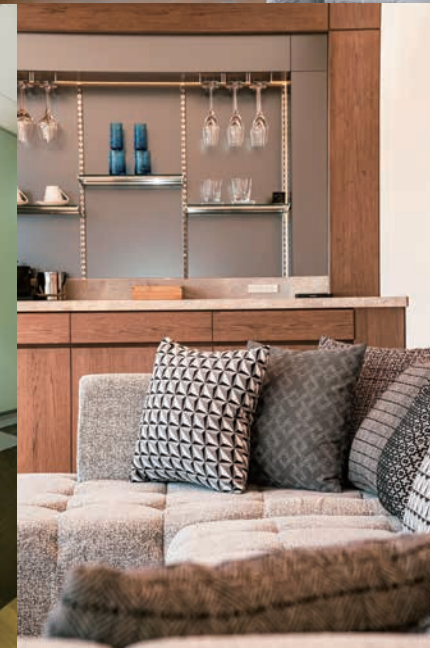
An Art Museum Where You Can Stay In Art Hotel in the Sky Where an Extraordinary Time Awaits  
まるで泊まれる美術館 ここは非日常を楽しむ天空のアートホテル



<https://parkhoteltokyo.com/rooms/>

## Park Suite

Room Size: 80sqm / 861sq ft  
Bed Size: 1 wide king bed  
W94.5in / L76.8in  
Capacity: 2  
No. of rooms: 1



An Art Museum Where You Can Stay In Art Hotel in the Sky Where an Extraordinary Time Awaits  
まるで泊まれる美術館 ここは非日常を楽しむ天空のアートホテル



## DeluxeTwin /Deluxe King

DeluxeTwin  
Room Size: 33sqm / 355sq ft  
Bed Size: 2 single beds  
W43.3in / L76.8in  
Capacity: 2

Deluxe King  
Room Size: 33sqm / 355sq ft  
Bed Size: 1 king bed  
W78.7in / 82.7in  
Capacity: 2

An Art Museum Where You Can Stay In Art Hotel in the Sky Where an Extraordinary Time Awaits  
まるで泊まれる美術館 ここは非日常を楽しむ天空のアートホテル

**Corner Twin  
Corner King  
/Tokyo Tower Side**

**Corner Twin**  
Room Size: 26sqm / 280sq ft  
Bed Size: 2 single beds  
W43.3in / L76.8in  
Capacity: 2

**Corner King**  
Room Size: 26sqm / 280sq ft  
Bed Size: 1 king bed  
W86.6in / 76.8in  
Capacity: 2



An Art Museum Where You Can Stay In Art Hotel in the Sky Where an Extraordinary Time Awaits

まるで泊まれる美術館 ここは非日常を楽しむ天空のアートホテル





## Queen / Twin /Tokyo Tower Side

**Queen**  
Room Size: 22sqm / 237sq ft  
Bed Size: 1 queen bed  
W63.0in / L76.8in  
Capacity: 2

**Twin**  
Room Size: 22sqm / 237sq ft  
Bed Size: 2 single bed  
W43.3in / L76.8in  
Capacity: 2

An Art Museum Where You Can Stay In Art Hotel in the Sky Where an Extraordinary Time Awaits  
まるで泊まれる美術館 ここは非日常を楽しむ天空のアートホテル

## Single

Room Size: 19sqm / 205sq ft  
Bed Size: 1 semi-double bed  
W55.1in / 76.8in  
Capacity: 1



An Art Museum Where You Can Stay In Art Hotel in the Sky Where an Extraordinary Time Awaits  
まるで泊まれる美術館 ここは非日常を楽しむ天空のアートホテル





## Barrier-free Room

Room Size: 26sqm / 280sq ft  
Bed Size: 2 single beds  
W43.3in / L76.8in  
Capacity: 2  
No. of rooms: 1

An Art Museum Where You Can Stay In Art Hotel in the Sky Where an Extraordinary Time Awaits  
まるで泊まれる美術館 ここは非日常を楽しむ天空のアートホテル

# Artist-in-Residence Project



Artist Rooms



An Art Museum Where You Can Stay In Art Hotel in the Sky Where an Extraordinary Time Awaits  
まるで泊まれる美術館 ここは非日常を楽しむ天空のアートホテル



# Artist-in-Residence Project



## Artist Rooms

Based on the concept of "Infinite time and space amid cognizant Japanese beauty." Park Hotel Tokyo has created a set of themes known as ART (Atrium, Restaurant, and Travel) and incorporated art allowing guests to experience Japanese aesthetics in the context of each of these themes. Providing a venue for artists to share their activities and information, we are taking on the role of a platform for the dissemination of Japanese culture, art and hospitality to our guests from all over the world. One part of this effort is the "Artist in Hotel" project. In the project, the artists themselves stayed in the hotel to absorb the atmosphere, and with the theme of "Beauty of Japan," fashioned a standard guest room into a work of art with the experience and inspiration through their stay. The hotel's guest rooms themselves are works of art with nothing like them anywhere else in the world.



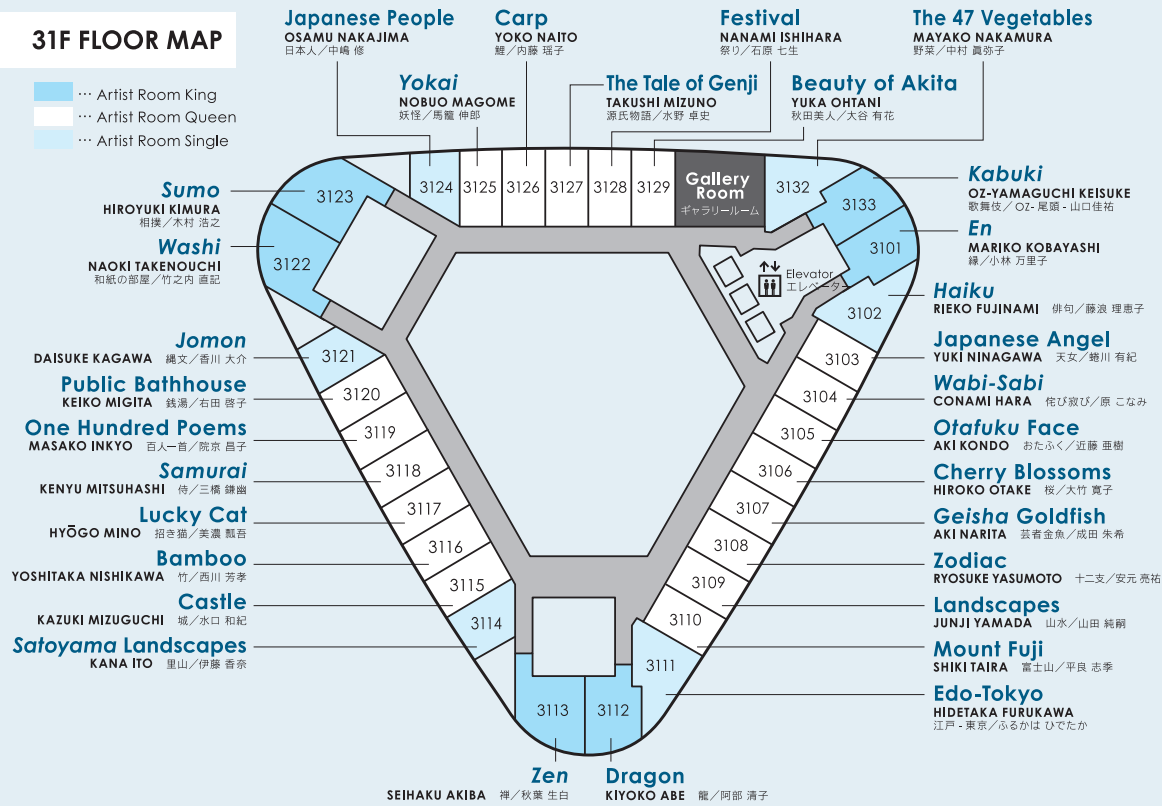
An Art Museum Where You Can Stay In Art Hotel in the Sky Where an Extraordinary Time Awaits

まるで泊まれる美術館 ここは非日常を楽しむ天空のアートホテル



### 31F FLOOR MAP

- Artist Room King
- Artist Room Queen
- Artist Room Single



# Artist-in-Residence Project



Artist Rooms

An Art Museum Where You Can Stay In Art Hotel in the Sky Where an Extraordinary Time Awaits

まるで泊まれる美術館 ここは非日常を楽しむ天空のアートホテル





An Art Museum Where You Can Stay In Art Hotel in the Sky Where an Extraordinary Time Awaits  
まるで泊まれる美術館 ここは非日常を楽しむ天空のアートホテル



## Artist-in-Residence Project



Artist in Hotel

Artist Rooms

## Artist Rooms Introduction

Artist Room En NO.31  
by MARIKO KOBAYASHI

For every turn of Fortune's wheel, there's a time when you feel you have a secret bond with the "supernatural" beyond your own intentions and choices, which might give you or deny you these "en", and guide you somewhere else. I think that in today's changing times, we've forgotten that such inter-relationships do exist. We are connected with everything we encountered so far, and our world will continue to expand as it connects with everything we meet. I hope that your "en" with Japan, this room, and everything that happens to you in future, will be good.

An Art Museum Where You Can Stay In Art Hotel in the Sky Where an Extraordinary Time Awaits

まるで泊まれる美術館 ここは非日常を楽しむ天空のアートホテル



PARK HOTEL  
T O K Y O

# ROOMS



## Park Suite

Room Size: 80sqm / 861sq ft  
 Bed Size: 1 wide king bed  
 W94.5in / L76.8in  
 Capacity: 2  
 No. of rooms: 1



## Barrier-free Room

Room Size: 26sqm / 280sq ft  
 Bed Size: 2 single beds  
 W43.3in / L76.8in  
 Capacity: 2  
 No. of rooms: 1



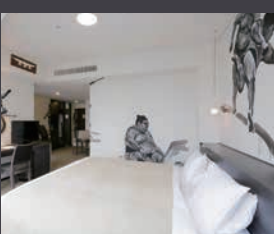
## Deluxe Twin / Deluxe King

### Deluxe Twin

Room Size: 33sqm / 355sq ft  
 Bed Size: 2 single beds  
 W43.3in / L76.8in  
 Capacity: 2

### Deluxe King

Room Size: 33sqm / 355sq ft  
 Bed Size: 1 king bed  
 W78.7in / 82.7in  
 Capacity: 2



## Artist Room King Artist Room Queen Artist Room Single



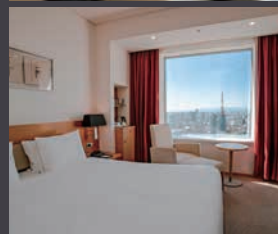
## Corner Twin Corner King /Tokyo Tower Side

### Corner Twin

Room Size: 26sqm / 280sq ft  
 Bed Size: 2 single beds  
 W43.3in / L76.8in  
 Capacity: 2

### Corner King

Room Size: 26sqm / 280sq ft  
 Bed Size: 1 king bed  
 W86.6in / 76.8in  
 Capacity: 2



## Queen / Twin /Tokyo Tower Side

### Queen

Room Size: 22sqm / 237sq ft  
 Bed Size: 1 queen bed  
 W63.0in / L76.8in  
 Capacity: 2

### Twin

Room Size: 22sqm / 237sq ft  
 Bed Size: 2 single bed  
 W43.3in / L76.8in  
 Capacity: 2



## Single

Room Size: 19sqm / 205sq ft  
 Bed Size: 1 semi-double bed  
 W55.1in / 76.8in  
 Capacity: 1

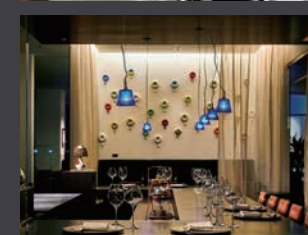


# RESTAURANTS & BAR



## Breakfast - ART AND GASTRONOMY FEAST

American Breakfast / Fresh Morning  
 ART colours Dining (25F)  
 7:00 a.m. – 10:30 a.m. (L.O. 10:00 a.m.)  
 Price: 4,000 JPY



## Hanasanshou /Traditional Japanese Kaiseki cuisine

5:30 p.m. – 10:30 p.m.  
 Course 8:30 p.m. / A la carte 9:30 p.m. / Drink 10:00 p.m.  
 Closed: Sundays & Mondays



## ART colours Dining /All-day dining

Tea Time 10:30 a.m. – 12:00 p.m.  
 Lunch 12:00 p.m. – 2:00 p.m. (L.O.)  
 Tea Time 2:00 p.m. – 5:00 p.m.  
 Dinner 5:00 p.m. – 11:00 p.m.  
 (Foods L.O. 10:00 p.m. / Drinks L.O. 10:30 p.m.)



## Bar The Society /Classic Single Malt Scotch, Excellent Cocktails and Fine Wine

5:00 p.m. – 11:00 p.m.  
 (Foods L.O. 10:00 p.m. / Drinks L.O. 10:30 p.m.)

## contact

Marketing Office (Shiba Park Hotel)  
 1-5-10 ShibaKoen, Minato-ku Tokyo 105-0011, Japan  
 Tel:+81 3 5470-7514  
 Park Hotel Tokyo | sales@parkhoteltokyo.com